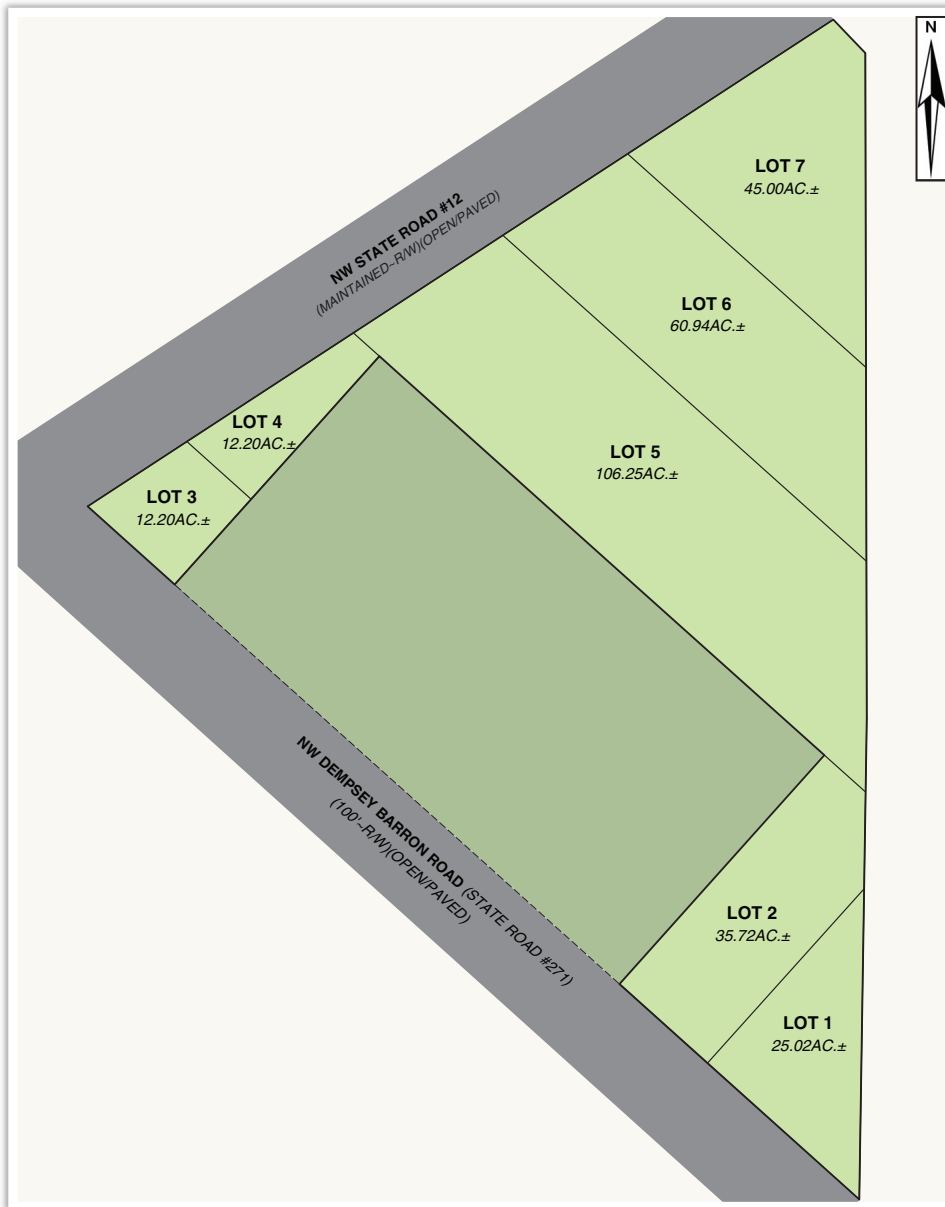


# Liberty County Business Park

Located at the intersection of Highway 12 and Dempsey Barron Road in north Liberty County, Florida, seven business and industrial tracts that range from 12 to 106 acres are now available. Natural gas and three-phase electrical power run along the property's Dempsey Barron Road boundary providing critical infrastructure elements to businesses. Liberty County Business Park is one of only three industrial sites in the entire county, providing a variety of industries to prosper including:

- Light and heavy manufacturing
- Distribution
- Commercial uses
- Storage



Lot	Acreage	Price
1	25	\$164,900
2	36	\$199,900
3	12	\$104,900
4	12	\$109,900
5	106	\$419,900
6	61	\$259,900
7	45	\$219,900

**Arnie Rogers, Licensed Real Estate Broker**  
 Verdura Realty, LLC • 316 Williams Street • Tallahassee, FL 32303  
 Cell: 850.491.3288 • Email: [arogers@verduraproperties.com](mailto:arogers@verduraproperties.com)  
[www.VerduraProperties.com](http://www.VerduraProperties.com)



# Liberty County Business Park

## Location Map



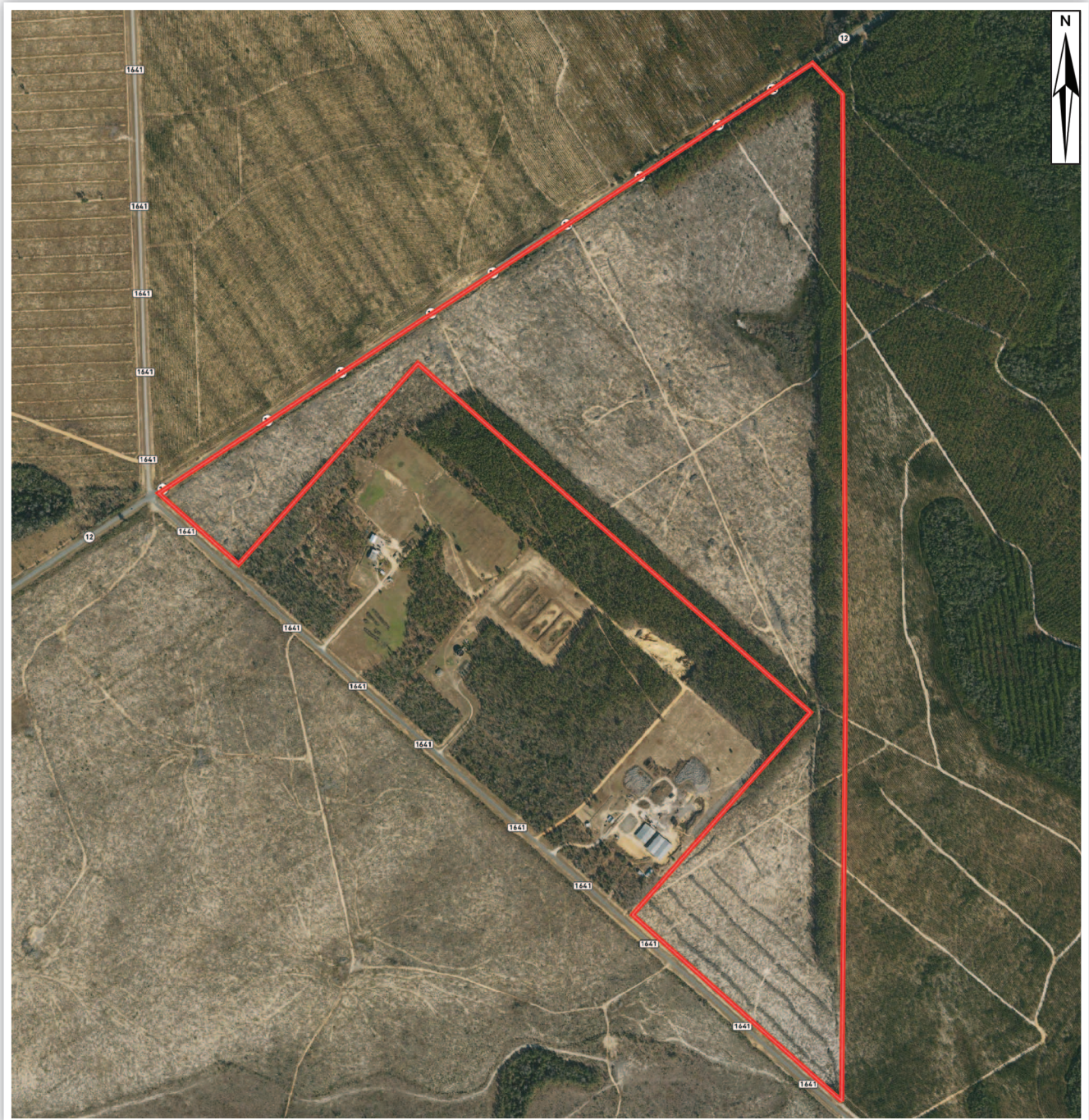
**Arnie Rogers, Licensed Real Estate Broker**  
Verdura Realty, LLC • 316 Williams Street • Tallahassee, FL 32303  
Cell: 850.491.3288 • Email: [arogers@verduraproperties.com](mailto:arogers@verduraproperties.com)  
[www.VerduraProperties.com](http://www.VerduraProperties.com)



Please note that while all information is believed to be reliable, none is guaranteed.

# Liberty County Business Park

## Aerial Map



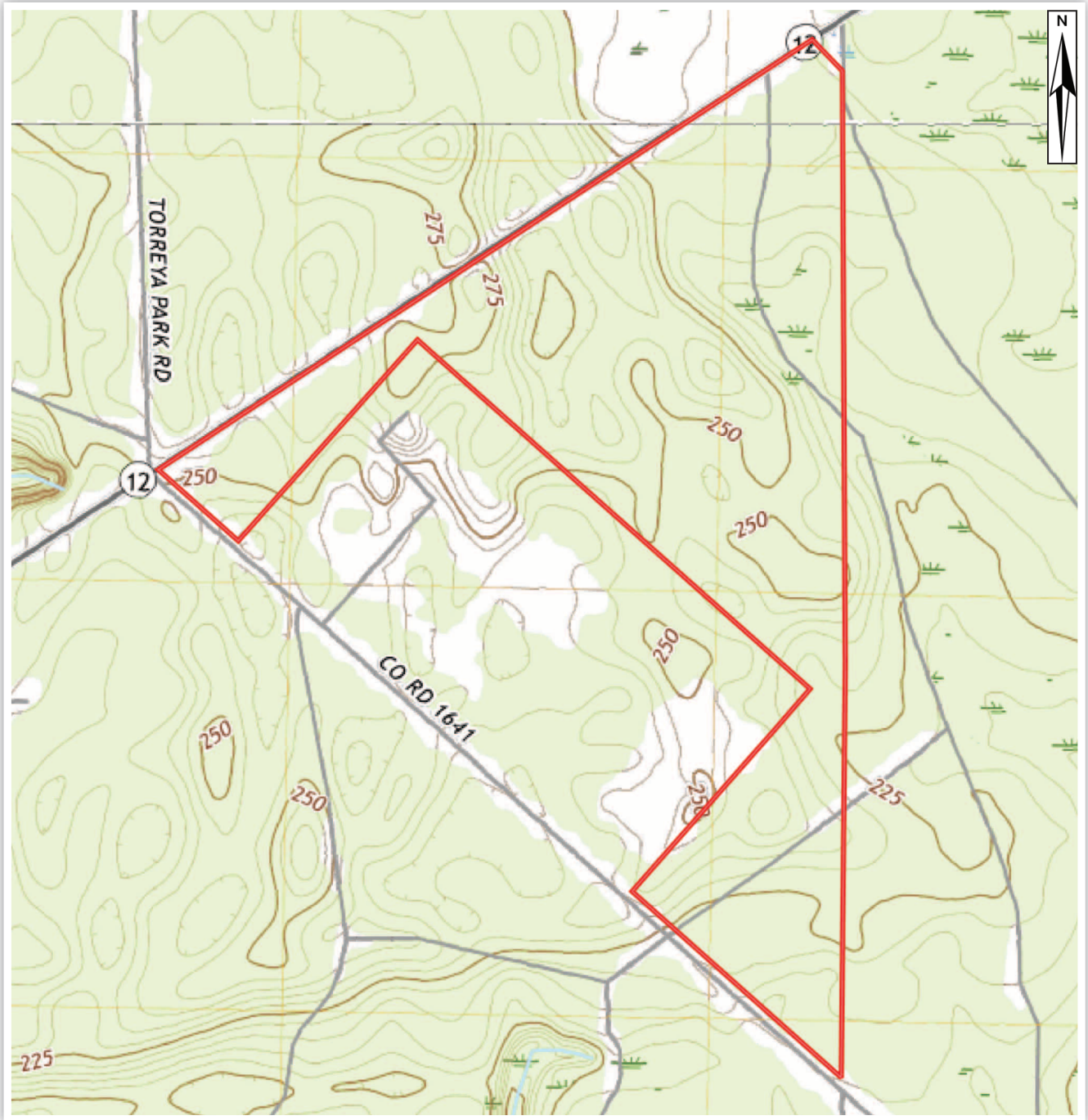
**Arnie Rogers, Licensed Real Estate Broker**  
Verdura Realty, LLC • 316 Williams Street • Tallahassee, FL 32303  
Cell: 850.491.3288 • Email: [arogers@verduraproperties.com](mailto:arogers@verduraproperties.com)  
[www.VerduraProperties.com](http://www.VerduraProperties.com)



Please note that while all information is believed to be reliable, none is guaranteed.

# Liberty County Business Park

## Topo Map



**Arnie Rogers, Licensed Real Estate Broker**  
Verdura Realty, LLC • 316 Williams Street • Tallahassee, FL 32303  
Cell: 850.491.3288 • Email: [arogers@verduraproperties.com](mailto:arogers@verduraproperties.com)  
[www.VerduraProperties.com](http://www.VerduraProperties.com)



Please note that while all information is believed to be reliable, none is guaranteed.